

Chapter 10

MOUNTING DETAILS OF CHASSIS EQUIPMENT

1. FUEL TANK
2. AIR TANK
3. EXHAUST SYSTEM

ABOUT CAD-DATA

CAD-DATA is contained on separate attachment file in this CD-ROM.

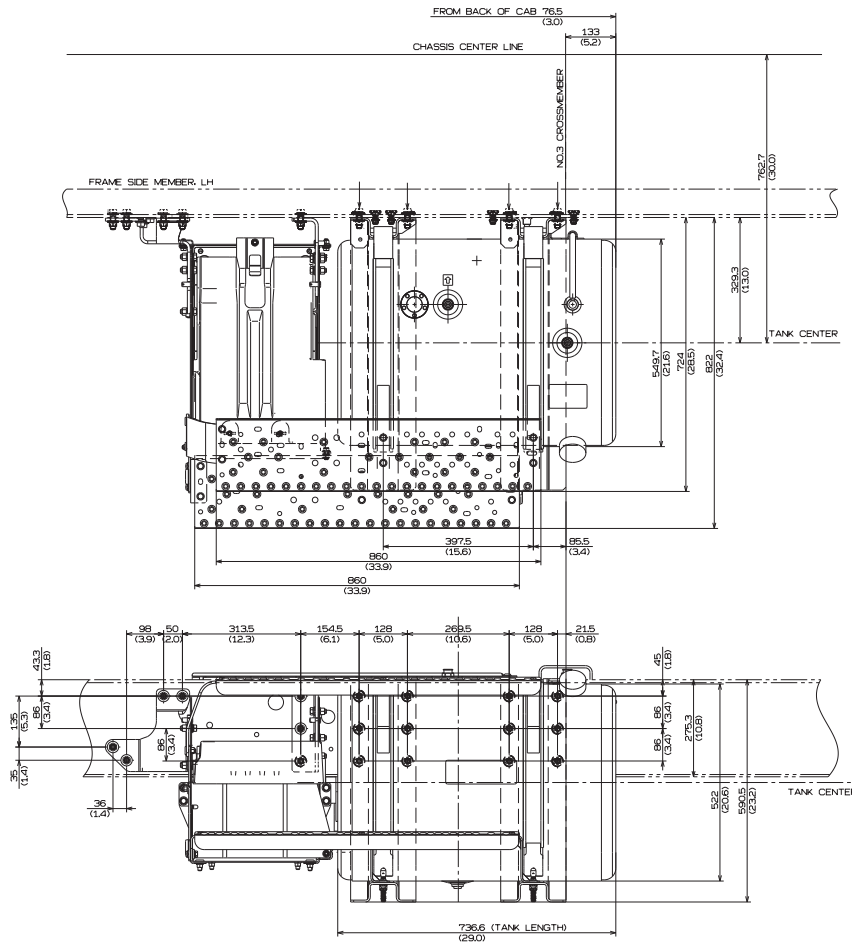
CONTENTS ; · EXHAUST SYSTEM

1. FUEL TANK

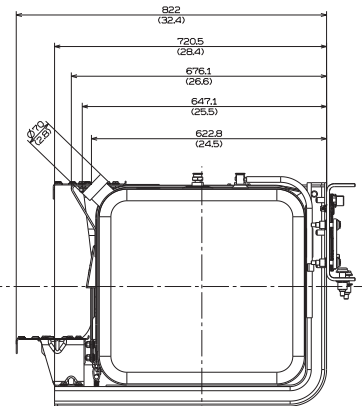
STANDARD

CAPACITY : 189L (50gal)

Unit : mm (in.)



IN CASE OF
FRAME THICKNESS:7.8 (0.31)
FRAME HIGHT:257.1(10.1)

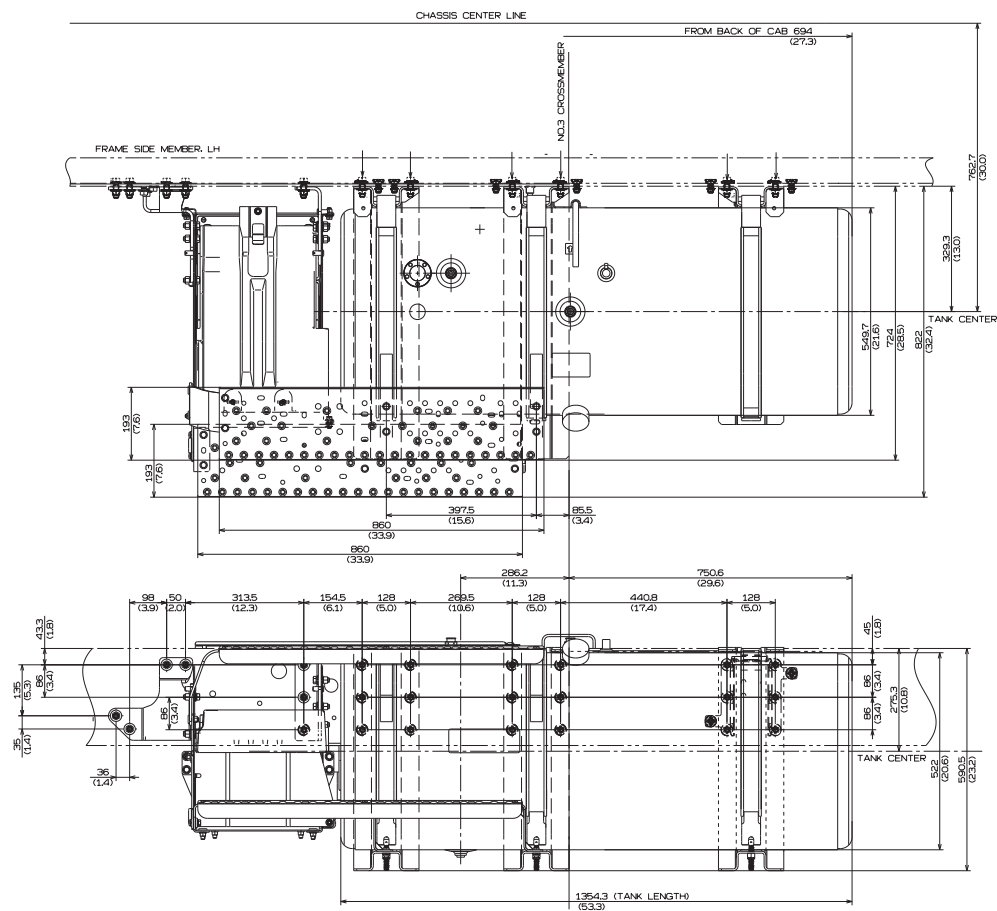


OPTION

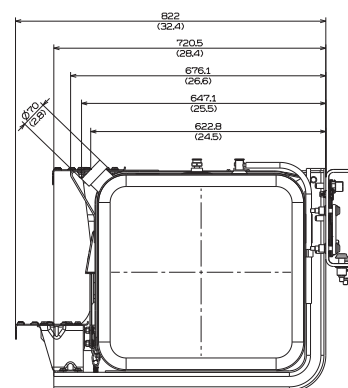
CAPACITY : 340L (90gal)

< Day Cab >

Unit : mm (in.)



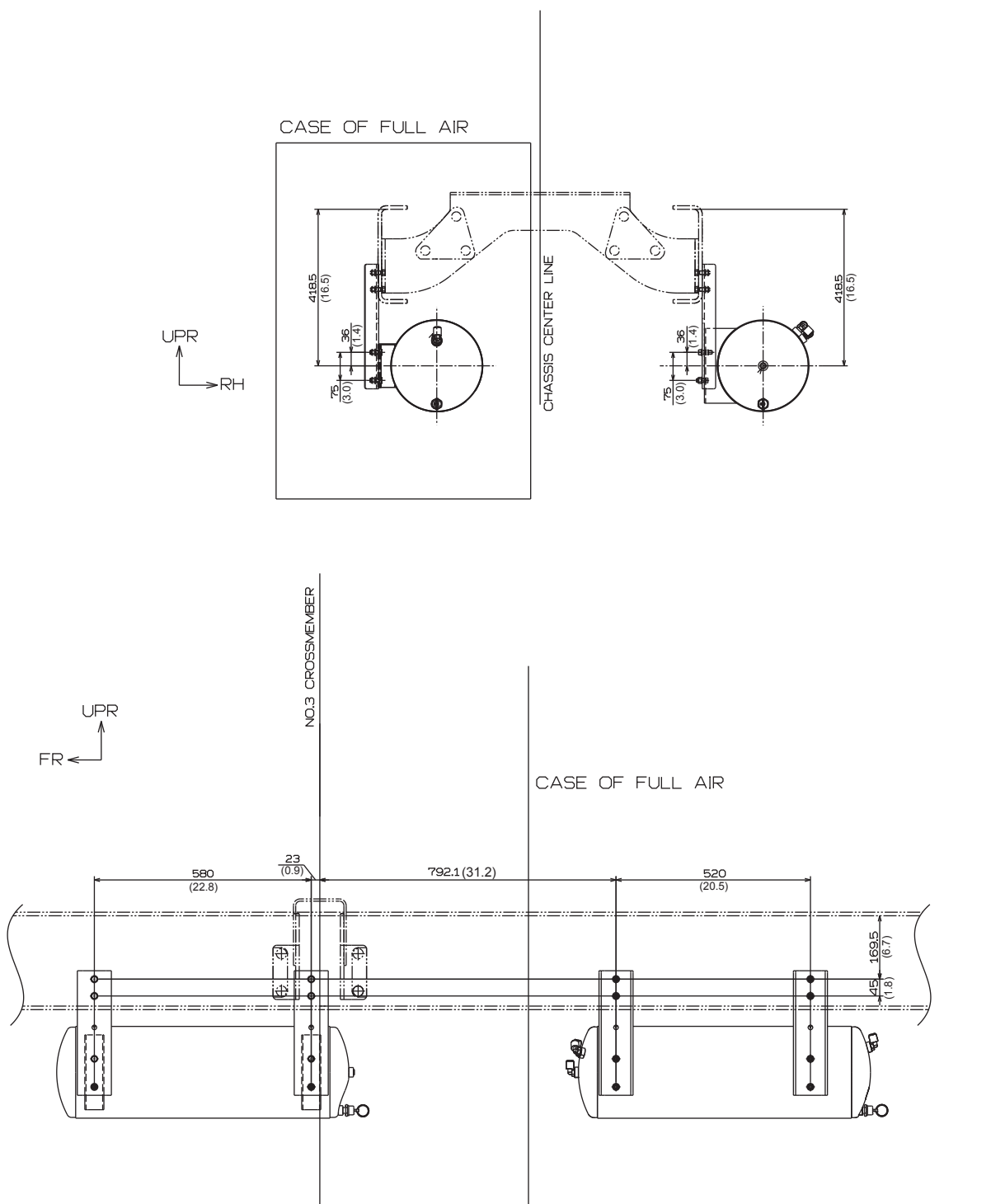
IN CASE OF
FRAME THICKNESS:7.8 (0.31)
FRAME HIGHT:257.1 (10.1)



2. AIR TANK

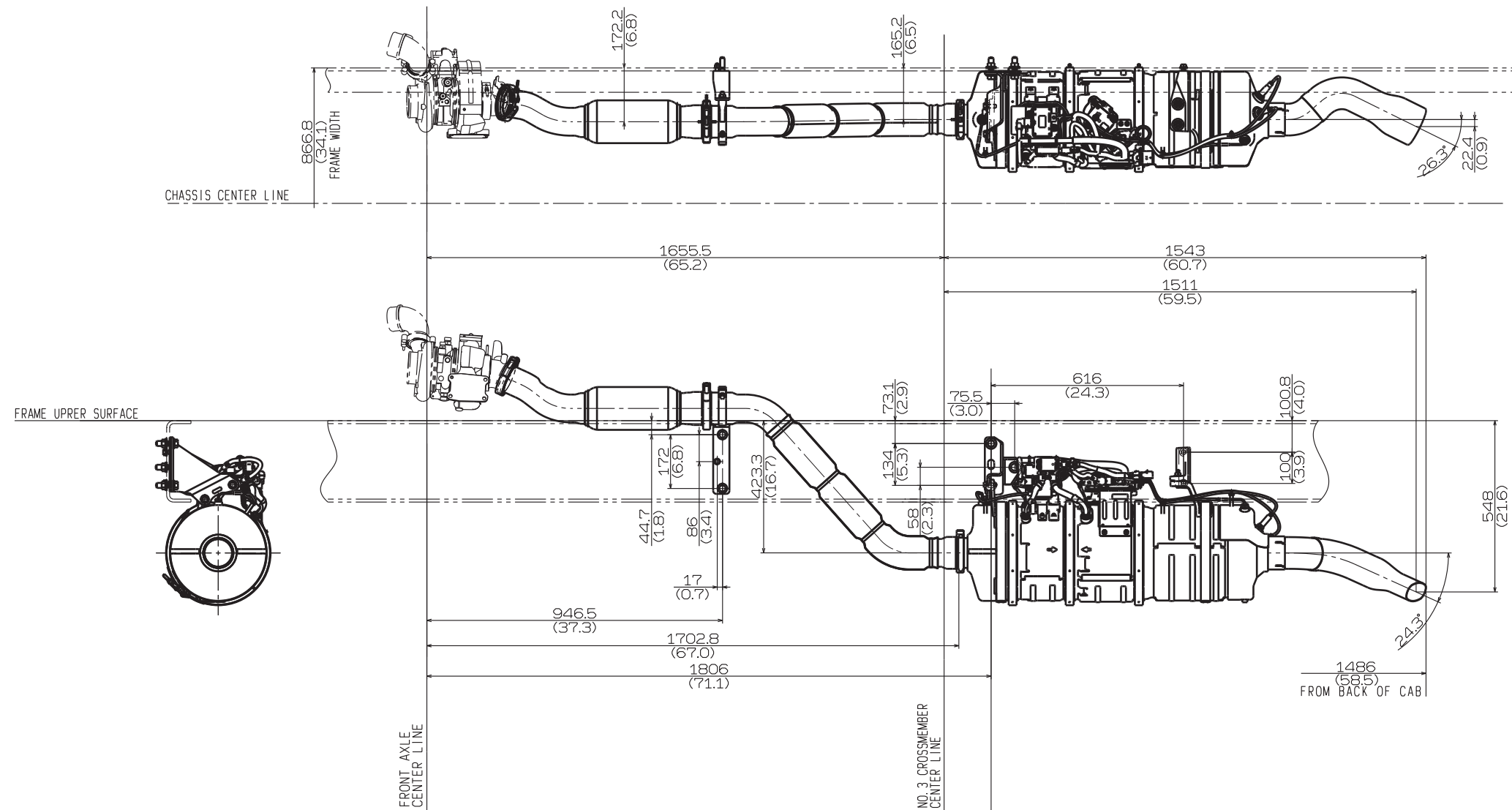
MODEL : NE, NF <HYDRO>
NJ, NV, NH <FULL AIR>

Unit : mm (in.)



<Day Cab>

Unit : mm (in.)



VERTICAL TAIL
<Day Cab ONLY>

Unit : mm (in.)

